

SPINNERS V12 RANGE

=> **In January 2020, E-PROPS has stopped manufacturing V12 Spinners.** They have been replaced by the V20 spinners (evolution of the range).

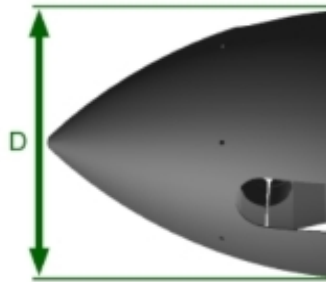
The E-PROPS spinner kit V12 range consists of a spinner, its mounting plate and all the screws.

The standard spinners have been designed for tractor propellers ranges only (DURANDAL, VORPALINE), V12 range only.



Spinner diameter is depending on the engine cover of the aircraft.

To define the good diameter for the spinner, please take the measure "D" :



measure D = max diameter of the spinner

E-PROPS spinners V12 range are available in different diameters.

If you hesitate between two sizes, take the smaller, for a better air flow on the engine cover.

SPINNERS	spinner diameter	spinner length	spinner weight
SP-210	210 mm	220 mm	350 gr
SP-230	230 mm	235 mm	400 gr
SP-240	240 mm	220 mm	425 gr
SP-250	250 mm	250 mm	450 gr
SP-265	265 mm	230 mm	480 gr
SP-275	275 mm	260 mm	510 gr
SP-300	300 mm	270 mm	780 gr

Assembly :

The E-Props spinners V12 range are assembled on the flange of the propeller, which allows them to be very light, because the mounting plate is a stiffener in the middle of the spinner.

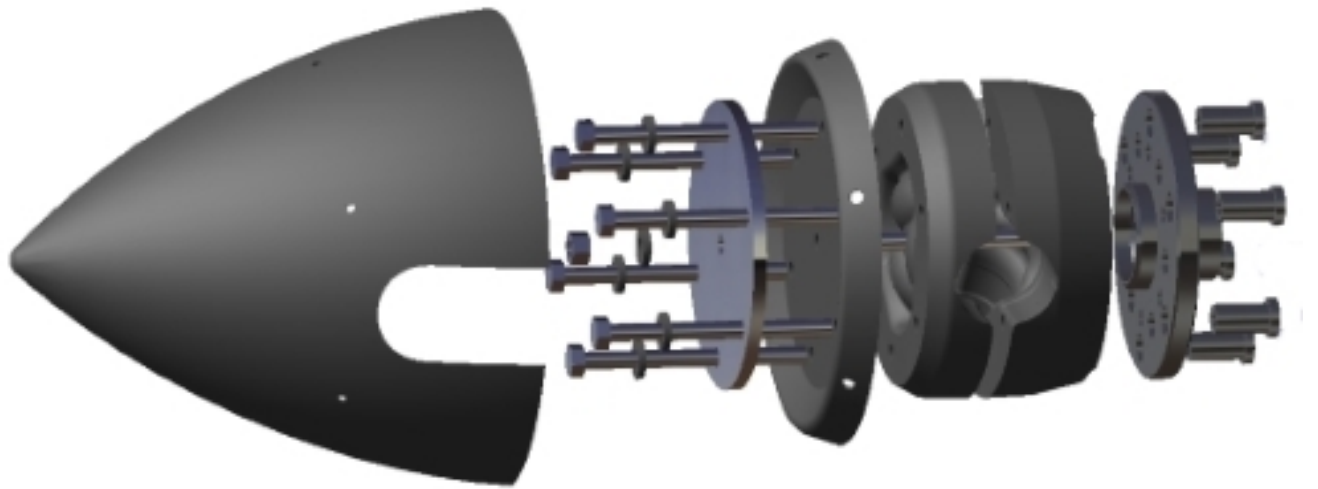
They are well-adapted to all E-PROPS hubs, standard or extended.

Today, the mounting plates drilling patterns are only 6M8d101,6 and 6M8d100.

The E-PROPS standard hub is placing the spinner at **-5mm** to the edge of the engine cover. The propeller must be assembled and the pitch has to be adjusted before placing the spinner, or, in certain cases, the blades without the good pitch could touch the edge of the spinner.

The V12 range spinners are assembled on their flange with 6 screws M5 x 16.

Torque = **3 N.m**



For balancing, a screw can be put by E-PROPS on the mounting plate. Please do not remove this screw from the plate, otherwise the balancing would be not good, and vibrations could appear.

On the plate, a yellow sticker indicates : "Do not remove - balancing weight".



V12 spinners

Finish

The E-PROPS spinners are carbon finish, shiny polished, without paint, varnish or gel-coat. You can paint the spinner if you want. All you have to do is to sand the surface, very lightly (600 grain sandpaper). The recommended paint is a bi-component polyurethane. A well sanded primer is necessary for a beautiful finish. Be careful to the balancing.

MINI-SPINNERS V12

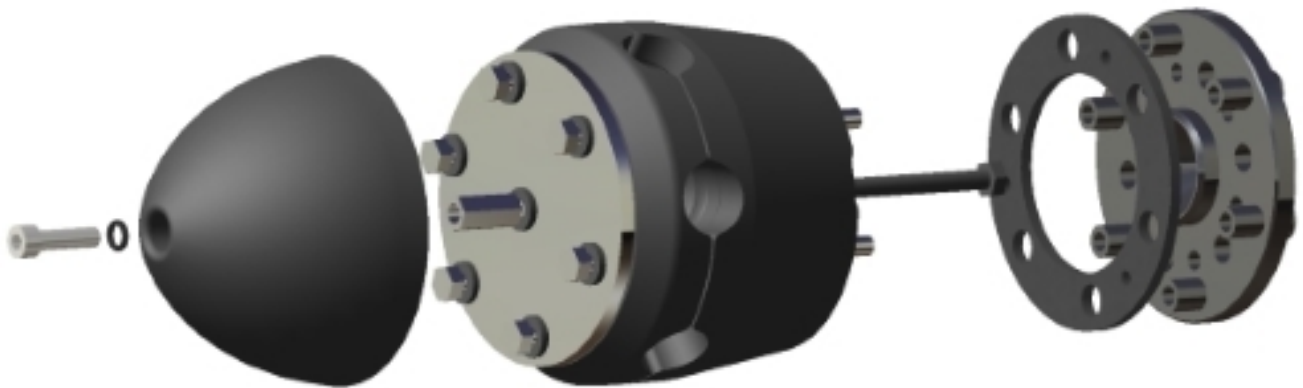
E-PROPS has developed a full carbon mini-spinner, which is adapted to tractor and pusher propellers ranges (DURANDAL, VORPALINE, EXCALIBUR), V12 range only :

- diameter : 130 mm
- lenght : 85 mm
- weight : 40 gr (70 gr with central screw)
- carbon finish, shiny polish



Assembly :

- On the central screw of the hub : put the hexagonal long screw with its Nord-Lock washer (replace the normal screw)
- Tighten this long screw at the same torque as the screws (please verify the torque on the Instruction Manual)
- Put the Mini-Spinner on the hub
- Put the Nylon screw with its seal in the long screw through the Mini-Spinner
- Tighten the Nylon screw at 1,5 to 2 N.m with a 6 mm Allen key



mini-spinner : a simple, ultra-light and smart solution for all aircraft