



Installation and Operating Instructions E-PROPS Mini-Spinner

Hélices E-Props manufactures carbon mini-spinners. They can be adapted to 2-, 3-, 4- and 6-blades propellers, tractor and pusher configuration. The spinner kit consists of a spinner and the screws. Weight with all screws : 70 gr

Hereafter are the installation instructions. Any other assembly is formally forbidden.

This spinner is assembled on the flange of the propeller. A screw maintains it on the central screw of the hub.

For the assembly of the E-PROPS propeller, please read the **INSTRUCTION and SERVICE MANUAL**

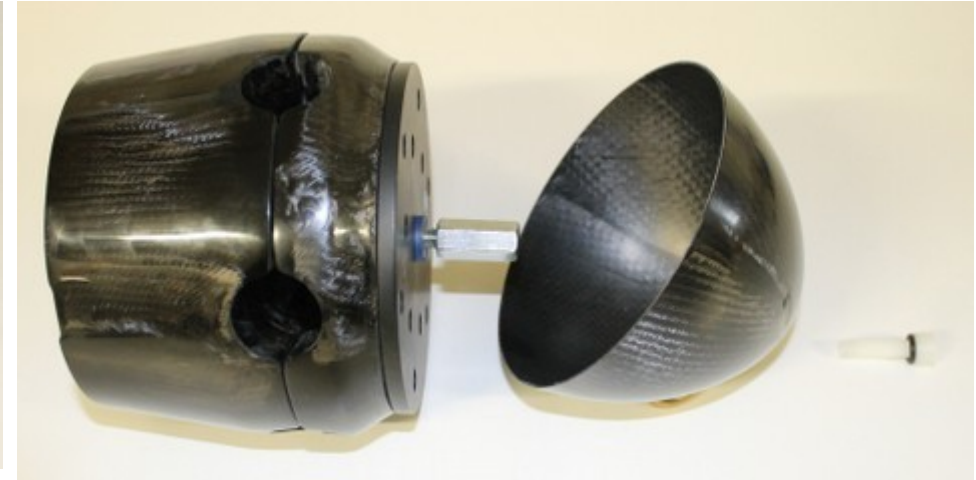
- 1 – On the central screw of the hub : put the hexagonal long screw with its Nord-Lock washer (replace the normal screw).
- 2 - Tighten this long screw at the same torque as the screws : 24 N.m or 28 N.m (please verify the torque on the Instruction Manual of your propeller)
- 3 – Put the Mini-Spinner on the hub
- 4 – Put the Nylon screw with its seal in the long screw through the Mini-Spinner
- 5 – Tighten the Nylon screw at 1,5 to 2 N.m with a 6 mm Allen key

=> SEE PICTURES ON PAGE 2

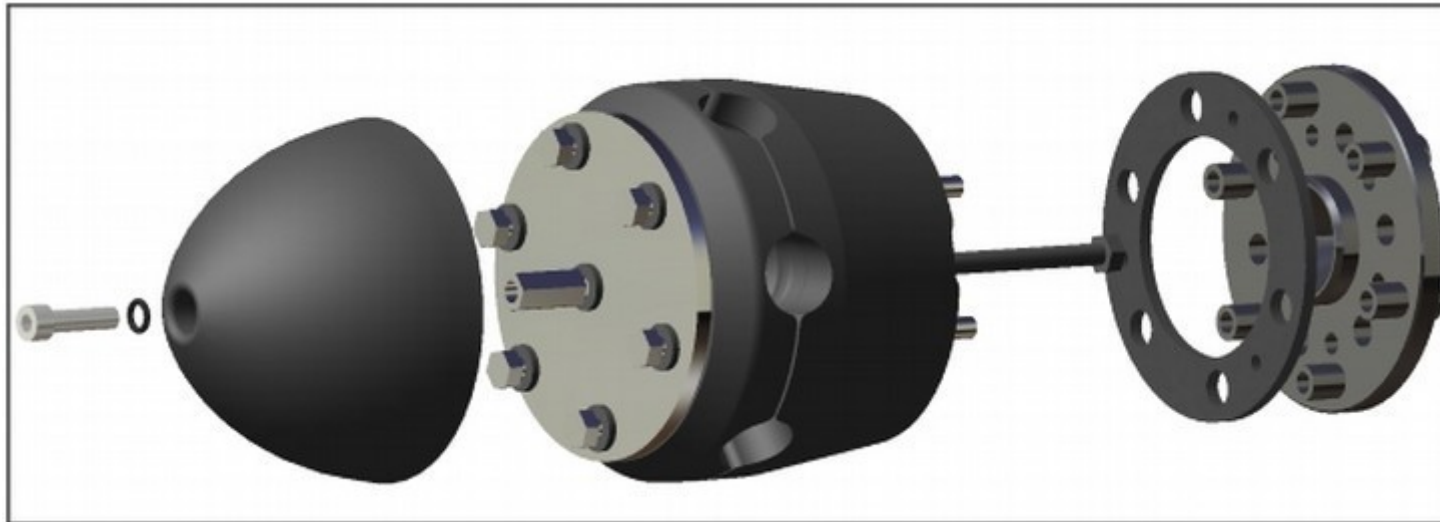
DO NOT FORGOT TO VERIFY THE TIGHTENING OF THE SCREWS REGULARLY, AS MENTIONNED IN THE INSTRUCTION AND SERVICE MANUAL OF YOUR PROPELLER
(updated version available on www.e-props.fr, page manuals)



*hub with long screw + Nord-Lock washer
Mini-Spinner + Nylon screw + seal*



*hub with long screw + Nord-Lock washer
Mini-Spinner + Nylon screw + seal*



mini-spinner on the hub of EXCALIBUR-6